

NYC & G

New York Cottages and Gardens

COTTAGESGARDENS.COM | OCTOBER 2014

69
DECORATORS
YOU NEED
TO KNOW

AS SEEN IN
NYC & G
New York Cottages and Gardens

SPECIAL
DESIGNER
ISSUE!

BROOKLYN
HEIGHTS
FINANCIAL
DISTRICT
MATINECOCK
MIDTOWN EAST
PARK AVENUE
RIVERSIDE
DRIVE



The Designer Showhouse of NEW YORK

What do you get when you take 22 design firms and set them loose on the 55th and 56th floors of the luxury Residences at W New York – Downtown? A showhouse to end all showhouses, full of brilliant decor, amazing ideas, and breathtaking views of Lower Manhattan’s Financial District. NYC&G was proud to sponsor the project, which raised funds for the new Lenox Hill HealthPlex in Greenwich Village and set the bar even higher for great design in New York. Just take a look at these pages, and imagine the possibilities.

PHOTOGRAPHS BY **ANASTASSIOS MENTIS**
COMPILED BY **PAIGE ALEXUS, CINDI COOK, AND KELLY VELOCCI** | STYLED BY **FRANCES BAILEY**

DARCI HETHER NEW YORK

BEDROOM, RESIDENCE B

Darci Hether approached her show-house bedroom with the vision of turning it into a calm sitting room where a well-traveled woman could go home to escape and relax. The color scheme started with a “bold mango Robert Allen drapery fabric that provides a multi-dimensional, coppery-gold touch,” she says. “I softened it up by using hues of gray and icy lavender. The contemporary area rug pulls everything together.”



For her bedroom-turned-sitting room (ABOVE), Darci Hether juxtaposed a ribbed gold side table from Mecox against a sofa covered in Robert Allen’s Royal Comfort in Cobblestone and Wool Suit in Greystone. Eileen Lang’s *Inlets* #1 hangs above. See Resources.



Ken Gemes’s living room design includes a Bernhardt Dubois cocktail table, a pair of Andrew Martin Tennyson chairs, and hand-painted silver fingerprints by Charlotte Morgan. See Resources.



KEN GEMES INTERIORS

LIVING ROOM/DINING ROOM, RESIDENCE F

“The most critical aspect of designing a room is to make it into a usable, comfortable place that transitions easily while still being aesthetically pleasing,” says designer Ken Gemes. Facing a more compact space than he’s used to working with, Gemes employed a neutral color palette, graphic dimensional details, and scaled-down furniture, thereby leaving everything open and airy. He also made sure that the fabrics throughout possessed compelling designs. “I always start with the textiles. They become a pivotal point and affect everything.”

PATRICIA FISHER DESIGN

LIVING ROOM/DINING ROOM, RESIDENCE B

"It's jaw-dropping," Patricia Fisher says of the view from the 55th-floor windows, which overlook New York Harbor and the Statue of Liberty in the distance. Despite the drama, she wanted comfort to be the dominant design factor here. Fisher typically gravitates to a lighter palette, as seen in the custom gray silk rug from Stark Carpet and Kravet's herringbone velvet in Platinum used on the window seats. "At the opening-night party, many people asked if they could sit on the window seats, which is exactly what I intended!"



Patricia Fisher anchored a chic urban living/dining space with the Bright Group's City Bench and a Philippe Starck for Kartell dining table (OPPOSITE). Silk magenta pillows and amethyst jewel glass lamps punctuate Anna Maria Mannarino's shimmering master bedroom (LEFT); the carpet is Samad's Galaxy in Graphite. A Chinoiserie cocktail table, Japanese painted screen, and Lucite chairs with abstracted animal-print upholstery take center stage in Meg Braff's living room (BELOW). See [Resources](#).

MANNARINO DESIGNS

MASTER BEDROOM, RESIDENCE B

"There's a story behind every showhouse room I design," says Anna Maria Mannarino. "I create it for myself and use it as a guide." This time around, the room's owner is a young, single professional woman who has a love for art, culture, and travel. A clean-lined, sophisticated space with soft edges, it features Vera Wang linens, velvets, and silk Maki Yamamoto pillows. *Winged Warrior*, a diptych by Sheba Sharrow, ties the room together and complements the neutral palette of grays, whites, and creams.



MEG BRAFF DESIGNS

LIVING ROOM/DINING ROOM, BATHROOM, AND BEDROOM, RESIDENCE G

"We were going for a bachelor-pad-cum-1940s-swanky-meets-21st-century look!" says designer Meg Braff, who paid homage to 1930s Hollywood Regency designer James Mont in her clutch of rooms. Braff used an abundance of her own silks and linens, much of them in the Chinoiserie style, for the upholstery and curtain treatments throughout.

INTERIORS BY ERIK R GALIANA

MASTER BEDROOM, RESIDENCE D

Imagining what kind of room he could see himself living in if he were a resident at the W, Erik R Galiana designed the master bedroom in dark tones that direct the eye toward the sea of buildings outside. Galiana also used a horizontal-stripe wallpaper as a key element. “The stripes parallel the floors of One World Trade Center and the architectural lines of the neighboring buildings,” he says.



Erik R Galiana crafted a multitextured master bedroom (OPPOSITE) with standouts like a fox and cashmere throw and an ocular-shaped white lacquer mirror from Christopher Guy. Daniel Park made bold choices for his living/dining area (ABOVE), including a custom gold colorway silk rug from the Stephanie Odegard Collection. In Rinehardt/Miller's bedroom (RIGHT), subtle purples and blues get a soothing backdrop of Benjamin Moore's Shadow Gray. The Giacometti-style lamp base is from John Rosselli Antiques. *See Resources.*

RINEHARDT/ MILLER

BEDROOM, RESIDENCE D

“This is only our second showhouse,” says Leslie Rinehardt, a partner with Marvin Miller in the firm Rinehardt/Miller, “but we plunged right in!” Mirrored Moroccan doors add architectural detail where there was none, along with a custom headboard by Marcia Levine The Workroom in a jubilant Robert Allen fabric. “We take our business seriously,” adds Miller, “but we don’t take ourselves seriously at all.”

DANIEL PARK DESIGN

LIVING ROOM/DINING ROOM, RESIDENCE D

“I designed the space as though I were the client,” says designer Daniel Park. “It’s a luxurious sanctuary from the city.” Park chose a bronze-accented credenza from the Stephanie Odegard Collection to act as a focal point in the room and hung a bold Christopher Guy mirror, which he likens to ancient Egyptian jewelry, above it. Park also included two occasional tables from Raul Carrasco.





In her luxuriously appointed rooms (THIS PAGE), Felicia Zwebner turned to Fendi Casa for a sumptuous headboard, fox throw, furniture, and fabrics. Roberto Cavalli wallpaper finishes the look. See *Resources*.

FELICIA ZWEBNER DESIGN

LIVING ROOM/DINING ROOM, BEDROOM, BATHROOM, AND GALLERY, RESIDENCE A

With the W only a few blocks from Wall Street, Felicia Zwebner imagined her space as the home of a young finance professional and used the surrounding bodies of water as inspiration—"to bring the rooms and exterior environment together," the designer says. The marine-based theme of the living room began to take shape with deep sea-colored artwork and reflective surfaces, like those of the ocean on a sunny day. The neon PULSE sign above the bed is a "reference to the pulse of the tides, the pulse of the Wall Street market, and the pulse of two lovers."



CALEB ANDERSON DESIGN

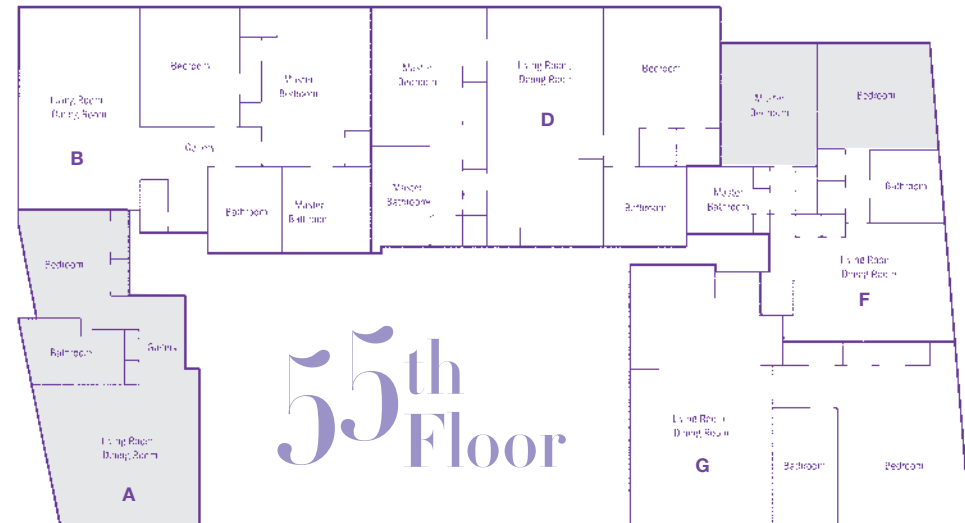
MASTER BEDROOM, RESIDENCE F

For his first showhouse as an independent designer, Caleb Anderson included a mix of modern and curated furnishings. "I like to create a dialogue between pieces, either through the way they are positioned or just through their materials," he says. Anderson designed the steel bed, which doubles as a sleek desk at one end, as well as the stacked bedside tables. An antique mirror is mounted against a silk drapery fabric from Kravet, which acts as a bed curtain.

MJ GRACE STUDIO

BEDROOM, RESIDENCE F

"It was pure fun," Mary J. Grace says of her inaugural showhouse endeavor, in which she transformed a bedroom into an office. It follows that her design concept for this somewhat traditional space allowed for whimsical touches, including an Atomium floor lamp by YLighting and an LC12 La Roche table. "I wanted to keep things simple, since the scale of everything outside the building is a bit more infinite."



Rich textures in Caleb Anderson's master bedroom (LEFT) include a Dualoy Leather waterfall mink blanket and a suite of images by David Row. An antique Spanish leather screen stands in contrast to Le Corbusier's LC12 La Roche table in Mary J. Grace's bedroom-turned-office (BELOW). See *Resources*.





BARBARA PAGE HOME

MASTER BEDROOM, RESIDENCE B

"The inspiration for this space, which I converted into a lady's dressing room, began with a custom mirror that was fashioned from two antique French door frames," says designer Barbara Page Glatt. "It adds architectural interest." A preponderance of blues—Benjamin Moore's Brittany Blue on the walls and an oversize custom ottoman upholstered in a Robert Allen velvet—plus two 1970s cane-back chairs with beige suede seat cushions polish off the look.

Barbara Page Glatt paired a Kelly Wearstler rug with vintage prints and a custom gilt and plaster floor mirror for the design of her dressing room (ABOVE AND TOP RIGHT). CetraRuddy's Ximena Rodriguez jazzed up her space (NEAR RIGHT) with a Mongolian lamb-covered chair by Paola Navone, a Lucite desk, chevron-patterned wallpaper, and De La Espada's gold Tulip floor lamp. See Resources.

CETRARUDDY

MASTER BEDROOM, RESIDENCE F

CetraRuddy designer Ximena Rodriguez employed a mix of luxe fabrics and furnishings to turn a master bedroom into a study for a modern Wall Street woman. "We wanted it to feel rich and inviting," she says. To that end, the muted DDC sofa is a stark contrast to the vibrant yellow Fort Street Studio rug. A John Salibello desk against the wall houses a vintage typewriter and phone.



DISALVO INTERIORS

LIVING ROOM/DINING ROOM, RESIDENCE F

When Annemarie diSalvo first stepped into her clean and serene space and saw the incredible vistas, she knew her design had to be somewhat fantastical. "I wanted to enhance the views while allowing the glamour of the room to shine," she says. To achieve this, diSalvo adopted a classic, as well as Continental, look that stemmed from an oversize, crackled *giclée* of Aphrodite that doesn't get lost amid the skyline. "By using a color palette of creams, putties, silvers, and blacks, I brought the outdoors in."



Comfortable formality reigns in Annemarie diSalvo's living room design, which features a richly patterned rug from Peykar and a custom settee. She snagged the Art Deco mirror from fellow showhouse designer Keith Baltimore. See Resources.

RICHARD MISHAAN
DESIGN

LIVING ROOM/DINING ROOM, BATHROOM, BEDROOM, AND GALLERY, RESIDENCE A

Richard Mishaan's imaginary tenant: a statement-making one. Simple Serena & Lily wallpaper became a bold gesture in the hands of the designer, who wrapped the wall behind, above, and opposite the bed in the graphic black-and-white stripe, then matched it against coordinating pieces of Flor carpeting underneath. The geometric play continues in the living room, with varied rectangles and squares of black and white flooring and a Richard Serra print hovering above. Adding further visual interest are conical table lamps and, in the foyer, a suite of Sol LeWitt-style prints, all from Homer, Mishaan's Greenwich Village shop.



Splashes of green and colorful abstract artworks counterbalance graphic black and white in Richard Mishaan's expansive corner unit (OPPOSITE AND THIS PAGE TOP AND BOTTOM LEFT). The chairs, sofa, vintage bar cart, and crooning Frank Sinatra, all custom designs, further enhance the lounge-y atmospherics. The red floating nightstands are from CB2. See *Resources*.

Gail Tarasoff-Sutton chose a geometric Robert Allen fabric in muted tones to dress up the window in her master bedroom. The nailhead-trim headboard is covered in textured gray metallic faux leather. See *Resources*.



ANNE TARASOFF
INTERIORS

MASTER BEDROOM, RESIDENCE D

"From the moment I walked in, I knew I wanted this room to be a guy's space—livable and masculine," says designer Gail Tarasoff-Sutton. Robert Allen's repeating geometric fabric, used for the window treatment and an accent pillow, acts as a focal point. "It was my first love, but at the beginning I couldn't decide where it would look best." Tarasoff-Sutton also dressed the bed with Sferra linens and pillows that complement the metallic gray headboard.



OVADIA DESIGN GROUP

LIVING ROOM/DINING ROOM, RESIDENCE B

"Since this is a top-floor apartment, I wanted to make it glamorous and sexy," Jack Ovadia says of his first-ever showhouse project. High ceilings gave the designer an opportunity to install a round chandelier measuring 90 inches in diameter, adding more drama to an already luxurious space. Additional cool came in the form of a ModShop Lucite dining table surrounded by black leather Artistic Frame chairs.



Jack Ovadia's living/dining area (OPPOSITE) is designed for the modern sophisticate, with luxurious elements including Avenue chairs by FZ Collection finished in white velvet and crystal buttons and a Phillips Collection Freeform coffee table in silver-leaf resin, cast to look like a tree trunk. A gilded steel starburst mirror holds court in Jacqueline Hosford's bedroom (THIS PAGE), where a Vidivixi bed frame is crowned by a fabric treatment in Robert Allen's Native Trail in Cayenne. See Resources.

JACQUELINE HOSFORD INTERIOR DESIGN

BEDROOM, RESIDENCE D

Thanks to her background in dance and theater, Jacqueline Hosford knew she wanted to transform her lofty space into a "joyful, eclectic, theatrical endeavor," she enthuses. "I wanted to address the height of the ceiling artistically and to carve up the three-dimensional reality at work here." While experimenting geometrically with the sharply angled furniture, Hosford also accentuated the bedroom with organic curves, found in the painted shapes on the wall and the cheery area rug.

NEAL BECKSTEDT STUDIO

LIVING ROOM/DINING ROOM, BATHROOM, AND BEDROOM, RESIDENCE G

Starting with a plain white shell was a plus for designer Neal Beckstedt. “There were curved walls in the living area, and the ceiling heights made the rooms easier to accentuate,” he says. The larger challenge involved curating specific items for the unusually shaped space, which Beckstedt achieved with such inspired pieces as a rosewood and glass side table from Joaquim Tenreiro and a vintage blue linen-upholstered chair from Carlo Hauner, both from R & Company.



Visual interest is everywhere in Neal Beckstedt's apartment (THIS PAGE), starting with the Achille Salvagni Emerald side table crafted of polished rosewood and a vintage black leather Oscar Niemeyer chair in the living room (ABOVE). In the bedroom (LEFT), a vintage Reggiani floor lamp stands at one side of the bed, while a circa-1770 night table, topped by a ceramic gilt funnel lamp by Andrea Koeppel, sits on the other. See *Resources*.



ATELIER DURANTE INTERIOR DESIGN

BEDROOM, RESIDENCE F

Attention-grabbing views required Pamela Durante to be creative when furnishing this bedroom, which she redesigned as a horse-themed lounge. “The view is beautiful, but it competes with the room,” says Durante, who took advantage of the space's height by hanging gray silk drapes from Carnegie inches below the ceiling and coupling them with abstract horse-motif artwork, all of which “draw the eye up.” Golden hues, found in the silk rug from Stark Carpet and a velvet armchair, accentuate the otherwise monochromatic palette.

Pamela Durante's design for her bedroom-turned-lounge (ABOVE) includes a gray silk velvet daybed accented with an embroidered linen throw from Vervain. A custom-beveled, mirrored folding screen in faux bone adds further height to the space while making it appear even larger. See *Resources*.





HARRY HEISSMANN

BEDROOM, RESIDENCE B

"I dedicated my space to my grandmother," says Harry Heissmann. "She was a very prominent force in my life." In reconfiguring this bedroom into a study, the designer started with a multihued blue rug that set the color story (blue happens to be his grandmother's favorite hue), then applied a dark Venetian plaster on the walls so the whimsical gold details could pop. "It's a combination of quirky objects and comfy pieces, a space full of little surprises."

BALTIMORE DESIGN GROUP

LIVING ROOM/DINING ROOM, RESIDENCE D

Unlike many of the showhouse's designers, Keith Baltimore chose not to emphasize his space's views. "I wanted to take the resident on a Palm Springs vacation," he says. To do so, Baltimore incorporated a row of three awnings—upholstered in a black-and-white-striped fabric from Kravet—that hang above a Swaim sofa. In the dining area, faux grass place mats sit on a Trica glass table. "A showhouse is like a laboratory. I get to play, and I get to push the envelope!"



A study designed by Harry Heissmann (OPPOSITE TOP) includes a gold leather Craig Kellogg for Gratz Industries chair, a vintage rhinoceros coffee table, and a gilt metal palm tree, as well as a flying peacock from Creel and Gow. Keith Baltimore brightened up his dining area with a pull-out bench covered in Kravet's Reverso fabric in Mimosa (OPPOSITE BOTTOM); his Palm Springs-inspired living room (THIS PAGE) features fluted yellow end tables, striped awnings, and a graphic wool rug from Country Carpet. See Resources.